



FOXRRIDGE
HOMES

A QUALICO® Company



ELEVATION A



ELEVATION B

Concept 8815 – Tofino

Two Storey, 1,656 sq. ft.

3 bedrooms, 2.5 bathrooms

If you don't already have the ideal piece of land, as a chosen and reputable custom builder, Foxridge Homes has access to a carefully-curated, exclusive selection of lots in Winnipeg's (and the surrounding areas') most appealing new neighbourhoods.

Learn more at foxridgehomeswpg.com



FEATURES:

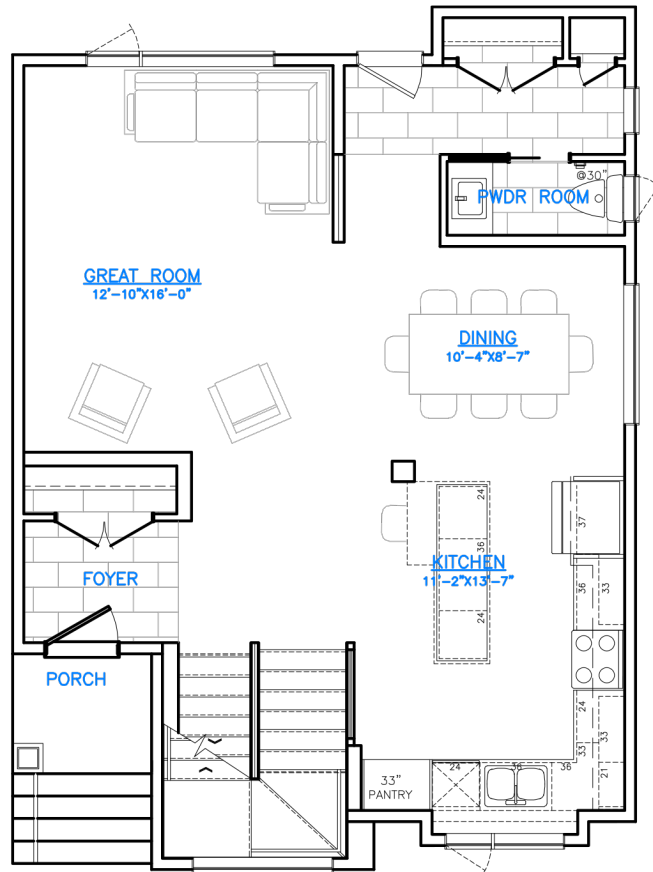
- Caesarstone quartz countertops in kitchen, powder room, and ensuite
- Laminate flooring to main floor living areas
- Primary bedroom includes walk-in closet and ensuite with Award Marble shower
- Second floor laundry room
- High efficiency furnace and air conditioner
- Energy-efficient triple pane windows with 1 coat of Low-E and 1 argon gas filled space
- LED lighting package
- 1-2-5-10 National Home Warranty

Concept 8815

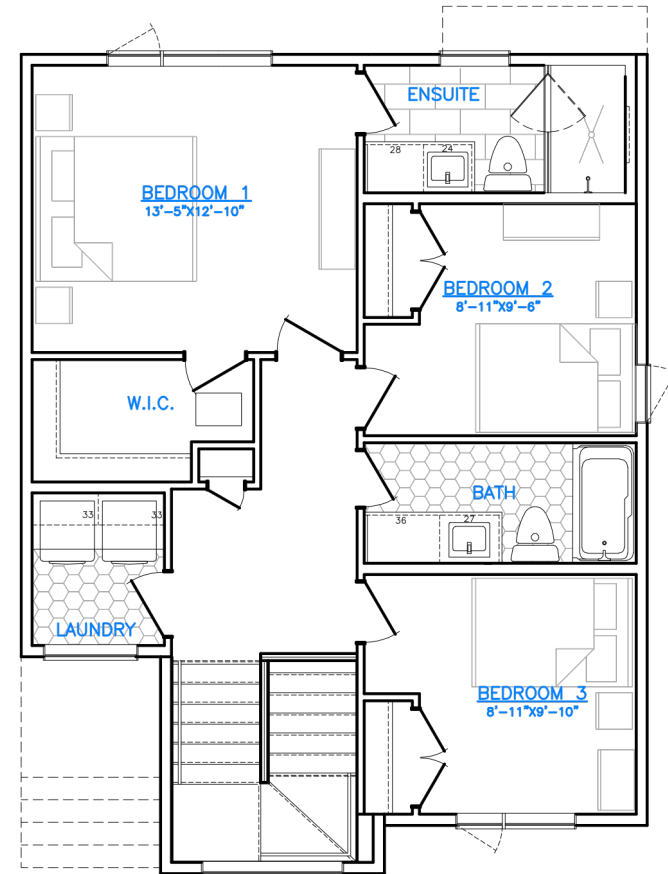
FLOOR PLAN

MAIN FLOOR: 847 SQ. FT.
SECOND FLOOR: 809 SQ. FT.

MAIN FLOOR



SECOND FLOOR



A QUALICO Company

ONE DR. DAVID FRIESEN DRIVE
WINNIPEG, MANITOBA | R3X 0G8
PHONE: 204.224.6175

foxridgehomesswpg.com

All illustrations are artist's conception and may vary. Room dimensions are approximate. Windows and room sizes may vary with elevations. Mechanical equipment location and placement subject to change as required by building code and at discretion of builder. Furniture outlines for purpose of visualizing room layout only, furniture not included. Foxridge Homes reserves the right to change material or specifications without notice.

Plan Rev - 03/30/2023