



A QUALICO® Company

[foxridgehomeswpg.com](http://foxridgehomeswpg.com)

204.224.6175



ELEVATION A

# Concept 2120 – The Olympus

**Two Storey, 2,135 sq. ft.**

**3 bedrooms, 2.5 bathrooms**

**20' x 22' attached garage**

If you don't already have the ideal piece of land, as a chosen and reputable custom builder, Foxridge Homes has access to a carefully-curated, exclusive selection of lots in Winnipeg's (and the surrounding areas') most appealing new neighbourhoods.

Learn more at [foxridgehomeswpg.com](http://foxridgehomeswpg.com)

## FEATURES:

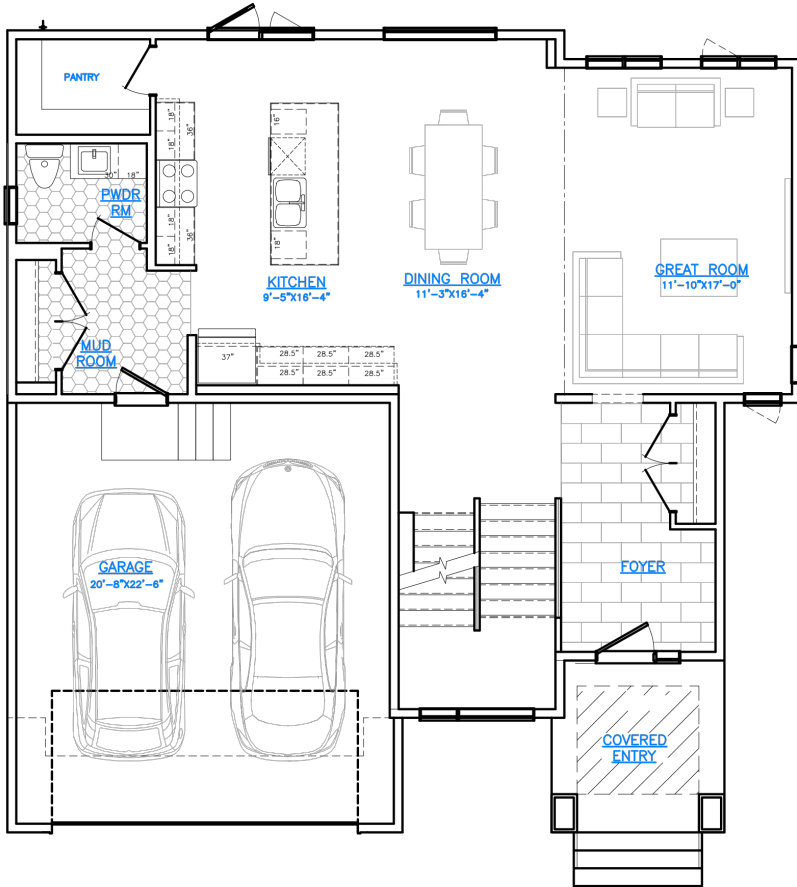
- Caesarstone quartz countertops in kitchen, powder room, and ensuite
- Laminate flooring to kitchen, great room and dining room
- Electric fireplace with media rough-in, as per plan
- Primary bedroom with walk-in closet and 5-piece ensuite including double vanity and soaker tub
- High efficiency furnace & air conditioner
- 60 gallon hot water tank
- Programmable WIFI thermostat
- 1-2-5-10 National Home Warranty

# Concept 2120

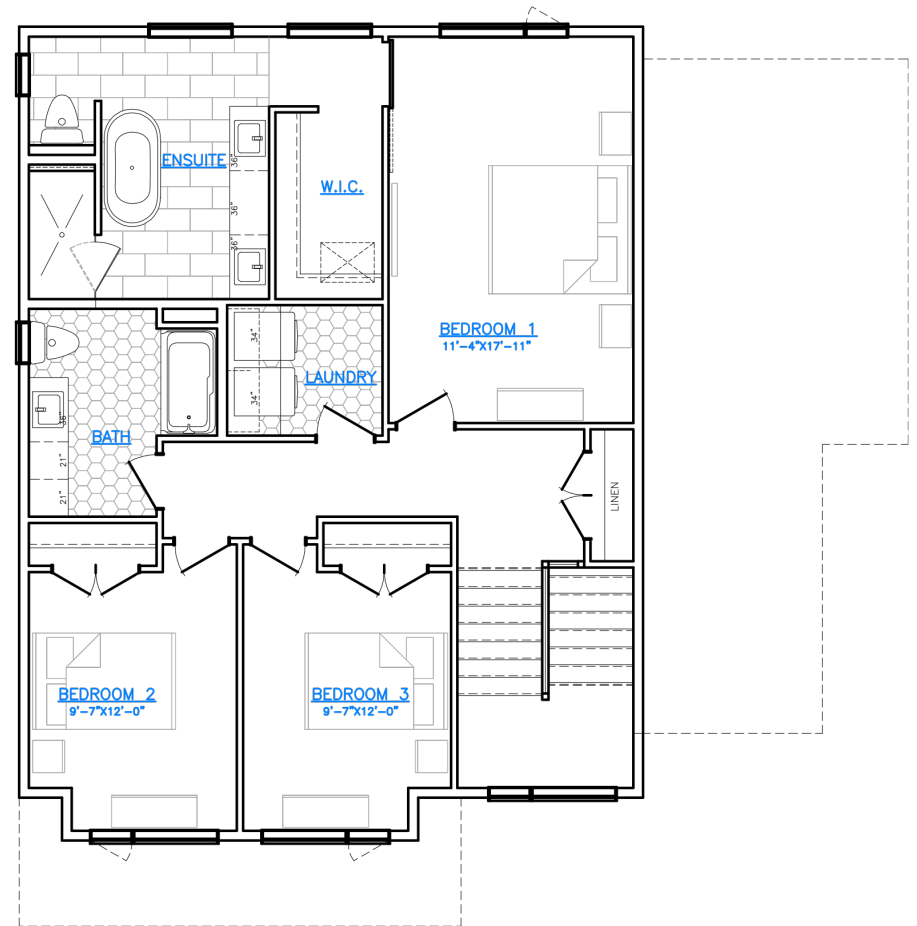
## FLOOR PLAN

MAIN FLOOR: 1,054 SQ. FT.  
SECOND FLOOR: 1,081 SQ. FT.

### MAIN FLOOR



### SECOND FLOOR



**FOXRIDGE**  
HOMES

A QUALICO Company

ONE DR. DAVID FRIESEN DRIVE  
WINNIPEG, MANITOBA | R3X 0G8  
PHONE: 204.224.6175

[foxridgehomeswpg.com](http://foxridgehomeswpg.com)

All illustrations are artist's conception and may vary. Room dimensions are approximate. Windows and room sizes may vary with elevations. Mechanical equipment location and placement subject to change as required by building code and at discretion of builder. Furniture outlines for purpose of visualizing room layout only, furniture not included. Foxridge Homes reserves the right to change material or specifications without notice.

Plan Rev - 3/22/2023