



204.224.6175



FOXRIDGE HOMES

A QUALICO® Company



ELEVATION B



ELEVATION C

Concept 2105 – Blackcomb

Two Storey, 2,201 sq. ft.

3 bedrooms, 2.5 bathrooms

22' x 22' attached garage

If you don't already have the ideal piece of land, as a chosen and reputable custom builder, Foxridge Homes has access to a carefully-curated, exclusive selection of lots in Winnipeg's (and the surrounding areas') most appealing new neighbourhoods.

Learn more at foxridgehomeswpg.com

FEATURES:

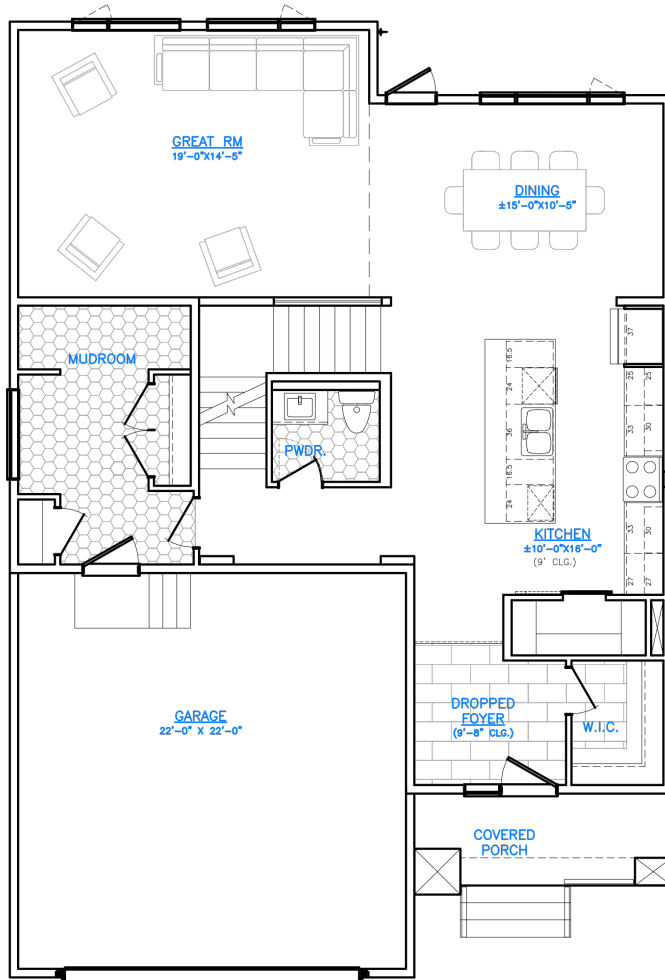
- Caesarstone quartz countertops in kitchen, powder room, and ensuite
- Laminate flooring to main floor living areas
- Stainless steel chimney-style hood fan and ceramic tile backsplash in kitchen
- Primary bedroom includes walk-in closet and 5-piece ensuite with soaker tub and double vanity
- Electric fireplace with media rough-in, as per plan
- Programmable WIFI thermostat
- High efficiency furnace and air conditioner
- 1-2-5-10 National Home Warranty

Concept 2105

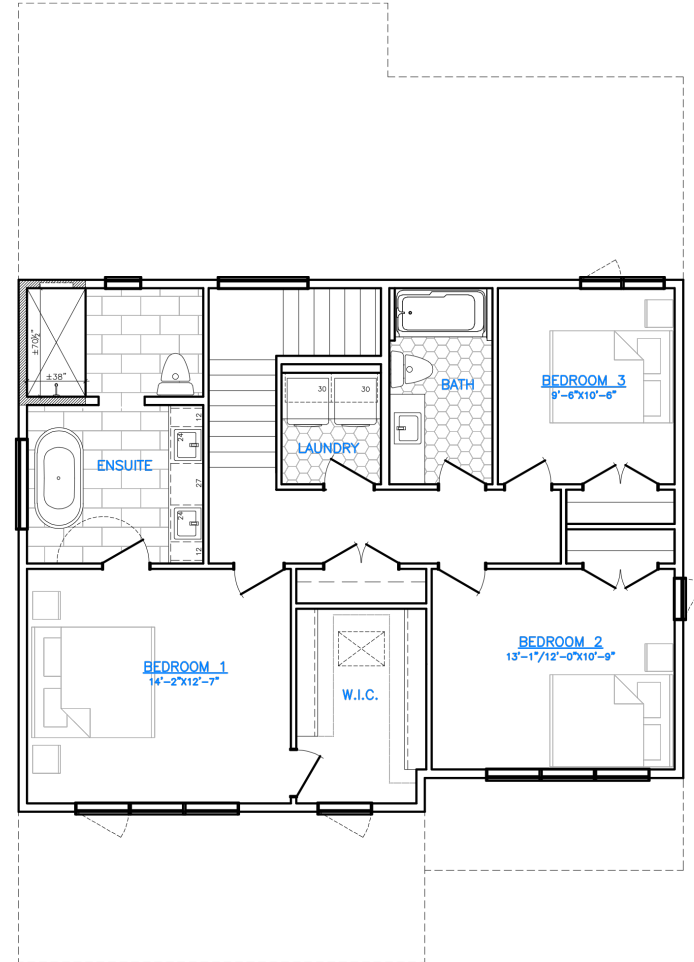
FLOOR PLAN

MAIN FLOOR: 1,189 SQ. FT.
SECOND FLOOR: 1,012 SQ. FT.

MAIN FLOOR



SECOND FLOOR



FOXRIDGE
HOMES

A QUALICO Company

ONE DR. DAVID FRIESEN DRIVE
WINNIPEG, MANITOBA | R3X 0G8
PHONE: 204.224.6175

foxridgehomeswpg.com

All illustrations are artist's conception and may vary. Room dimensions are approximate. Windows and room sizes may vary with elevations. Mechanical equipment location and placement subject to change as required by building code and at discretion of builder. Furniture outlines for purpose of visualizing room layout only, furniture not included. Foxridge Homes reserves the right to change material or specifications without notice.

Plan Rev. 3/16/2023

Concept 2105

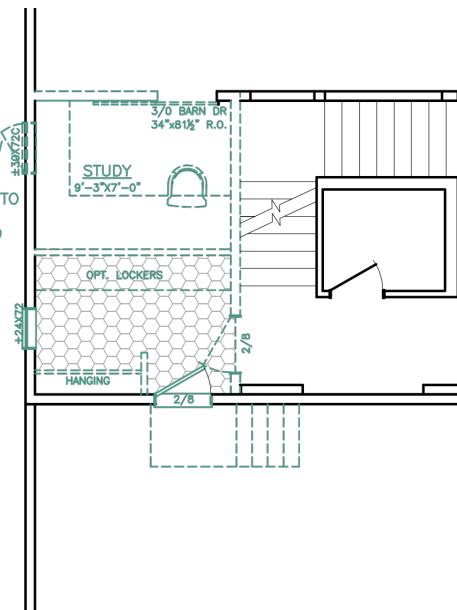
FLOOR PLAN OPTIONS

All illustrations are artist's conception and may vary. Room dimensions are approximate. Windows and room sizes may vary with elevations. Mechanical equipment location and placement subject to change as required by building code and at discretion of builder. Furniture outlines for purpose of visualizing room layout only, furniture not included. Foxridge Homes reserves the right to change material or specifications without notice.

MAIN FLOOR STUDY

MAIN FLOOR STUDY OPTION

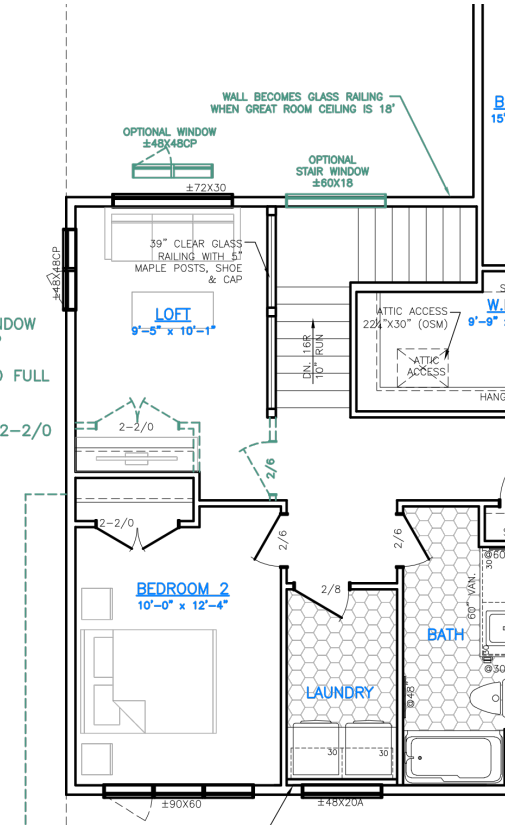
- REMOVES 60X16 WINDOW
- ADDS 30X72 CASEMENT WDW TO STUDY
- ADDS 3-0 BARN DOOR TO STUDY
- ADDS 24X72 WINDOW TO MUDROOM
- ADDS HANGING TO MUDROOM IN LIEU OF CLOSET
- RELOCATES GARAGE ENTRY MANDOOR



LOFT/4TH BEDROOM OPTION

4TH BEDROOM OPTION:

- REMOVES 72X30 WINDOW
- RELOCATES 48X48BCP WINDOW TO REAR
- TURNS STUBWALL TO FULL WALL
- ADDS 2/6 DOOR
- ADDS CLOSET WITH 2-2/0 DOOR



A QUALICO Company

ONE DR. DAVID FRIESEN DRIVE
WINNIPEG, MANITOBA | R3X 0G8
PHONE: 204.224.6175

foxridgehomesswpg.com