



**FOXRIDGE**  
HOMES

A QUALICO® Company

[foxridgehomeswpg.com](http://foxridgehomeswpg.com)

204.224.6175



# Concept 2102 - The Summit

**Two Storey, 2,675 sq. ft.**  
**3 bedrooms, 2.5 bathrooms**  
**22' x 22' attached garage**

If you don't already have the ideal piece of land, as a chosen and reputable custom builder, Foxridge Homes has access to a carefully-curated, exclusive selection of lots in Winnipeg's (and the surrounding areas') most appealing new neighbourhoods.

Learn more at [foxridgehomeswpg.com](http://foxridgehomeswpg.com)

## FEATURES:

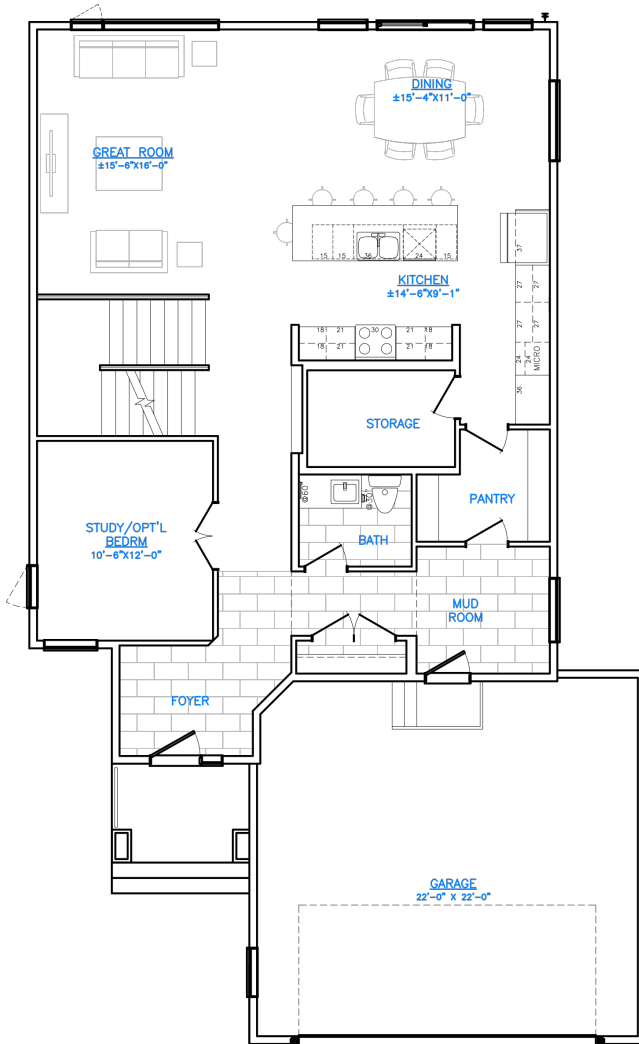
- Caesarstone quartz countertops in kitchen, powder room, and ensuite
- Laminate flooring to main floor living areas
- Electric fireplace with media rough-in, per plan
- Primary bedroom includes walk-in closet and 5-piece ensuite with double vanity and soaker tub
- Programmable WIFI thermostat
- High efficiency furnace & air conditioner
- 1-2-5-10 National Home Warranty

# Concept 2102

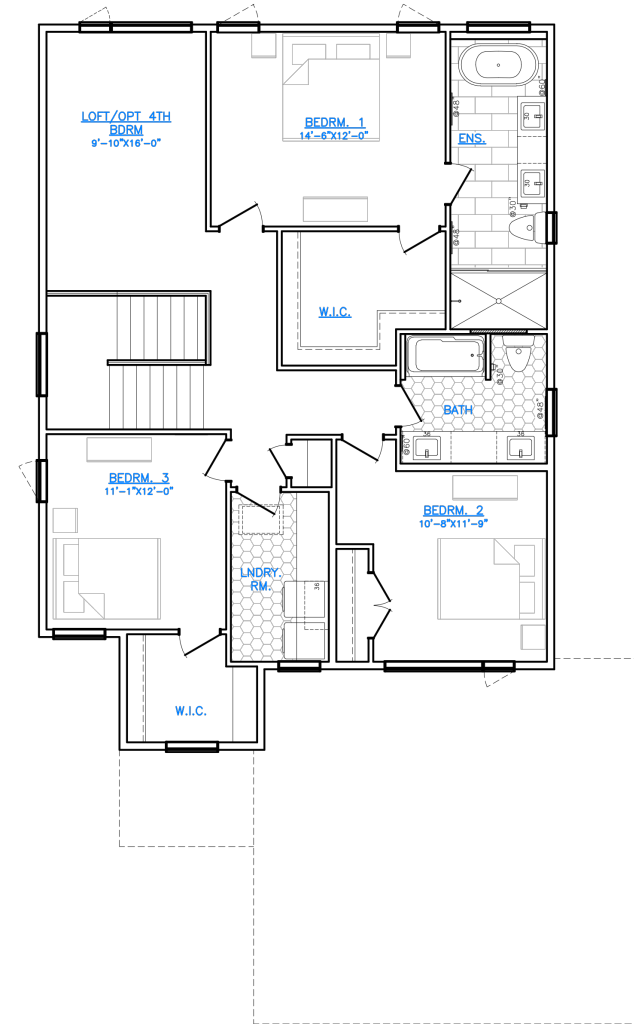
## FLOOR PLAN

MAIN FLOOR: 1,360 SQ. FT.  
SECOND FLOOR: 1,315 SQ. FT.

### MAIN FLOOR



### SECOND FLOOR



**FOXRIDGE**  
HOMES

A QUALICO Company

ONE DR. DAVID FRIESEN DRIVE  
WINNIPEG, MANITOBA | R3X 0G8  
PHONE: 204.224.6175

[foxyridgehomeswpg.com](http://foxyridgehomeswpg.com)

All illustrations are artist's conception and may vary. Room dimensions are approximate. Windows and room sizes may vary with elevations. Mechanical equipment location and placement subject to change as required by building code and at discretion of builder. Furniture outlines for purpose of visualizing room layout only, furniture not included. Foxyridge Homes reserves the right to change material or specifications without notice.

Plan Rev - 3/27/2023