



ELEVATION A

# Concept 1220 - The Cayley

**Bungalow, 2,082 sq. ft.**

**3 Bedrooms, 2 Bathrooms**

**22' x 24' attached garage**

If you don't already have the ideal piece of land, as a chosen and reputable custom builder, Foxridge Homes has access to a carefully-curated, exclusive selection of lots in Winnipeg's (and the surrounding areas') most appealing new neighbourhoods.

Learn more at [foxridgehomeswpg.com](https://foxridgehomeswpg.com)



**FOXRIDGE**  
HOMES

A QUALICO® Company

[foxridgehomeswpg.com](https://foxridgehomeswpg.com)

204.224.6175



## FEATURES:

- Modern farmhouse design
- Laminate flooring to main floor living areas
- Caesarstone countertops in kitchen, powder room, and ensuite
- Electric fireplace with media rough-in, as per plan
- 13' painted ceilings in foyer and study
- Programmable WIFI thermostat
- 60 gallon hot water tank
- High efficiency furnace & air conditioner
- 1-2-5-10 National Home Warranty

# Concept 1220

Bungalow, 2,082 sq. ft.

3 Bedrooms, 2 Bathrooms

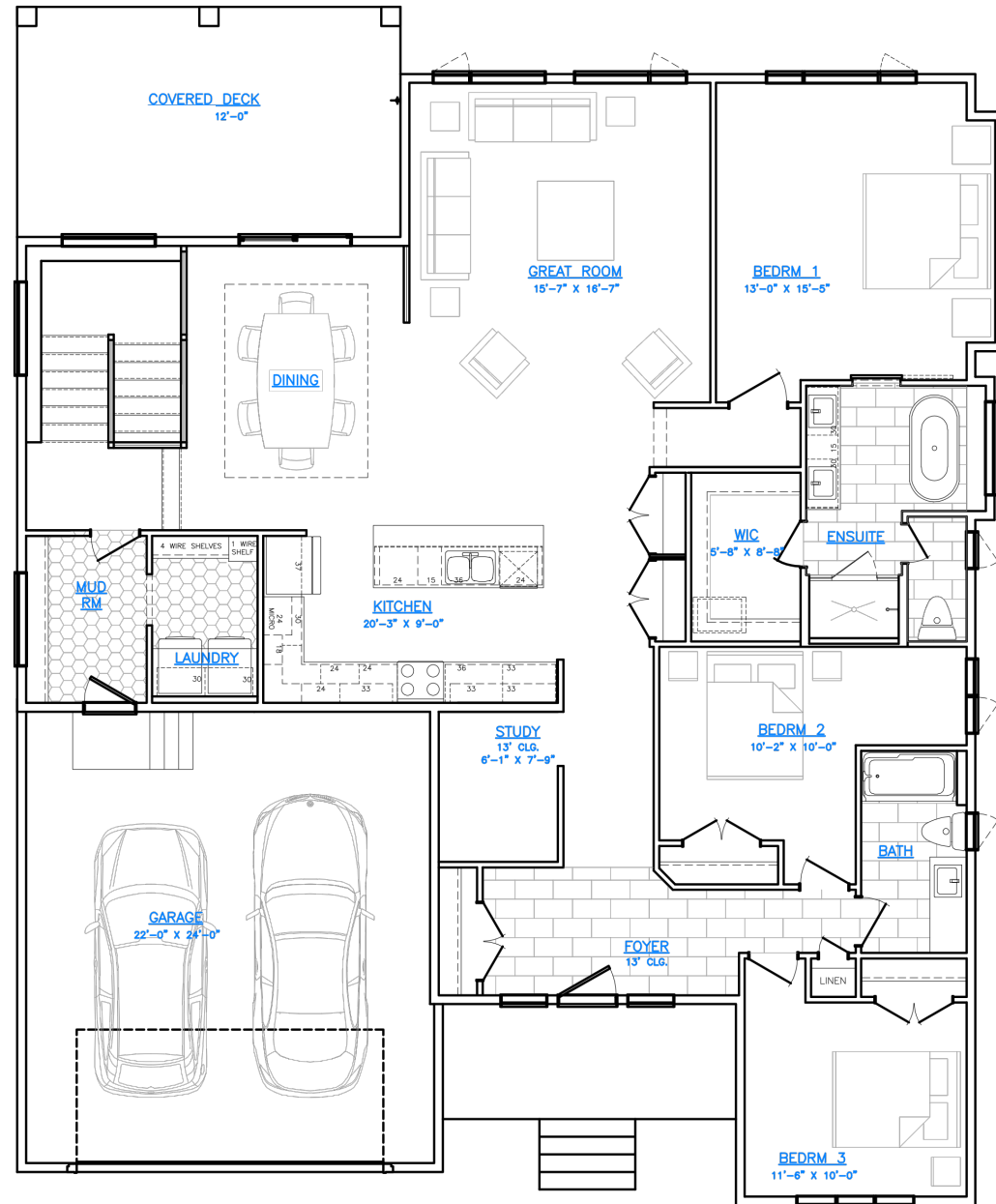
ASK YOUR SALES REPRESENTATIVE TO IDENTIFY AVAILABLE OPTIONS.

All illustrations are artist's conception and may vary. Room dimensions are approximate. Windows and room sizes may vary with elevations. Mechanical equipment location and placement subject to change as required by building code and at discretion of builder. Furniture outlines for purpose of visualizing room layout only, furniture not included. Foxridge Homes reserves the right to change material or specifications without notice.

Plan Rev. 3/15/2023

## FLOOR PLAN

### MAIN FLOOR



**FOXRIDGE**  
HOMES

A QUALICO Company

ONE DR. DAVID FRIESEN DRIVE  
WINNIPEG, MANITOBA | R3X 0G8  
PHONE: 204.224.6175

[foxridgehomesswpg.com](http://foxridgehomesswpg.com)