



**FOX RIDGE**  
HOMES

A QUALICO Company



4 Bresaylor Drive

CONCEPT 1030 A



**Bungalow, 1,995 sq. ft.**

**3 Bedrooms, 2 Bathrooms**

**TAYLOR FARM**

You deserve a home that's as highly-evolved as you are. And you can recognize that difference from every angle: from the design drawings, to the elevation, to the minute you walk in the front door.

Your Foxridge custom home has it all, including impeccable craftsmanship, innovative features, high-end national brands, award-winning design, the ultimate warranty program – and of course – a distinctive style that's all your own.

**SHOW HOME FEATURES:**

- 30' x 23' triple attached garage
- Kitchen features two islands for maximum counterspace
- Kitchen includes ceramic tile backsplash, quartz countertops, double fridge/freezer, wall oven, and unique stacked open cabinet
- Entertainment unit features floating drawer unit with stacked open cabinets and wood slats with adjoining fireplace wall
- Mudroom with custom lockers and cabinetry
- Main floor laundry room with cabinetry, sink, and quartz countertops
- Primary bedroom with deluxe ensuite including soaker tub and tiled shower
- All bedrooms with custom walk-in closets
- 1-2-5-10 National Home Warranty

# 4 Bresaylor Drive

CONCEPT 1030 A

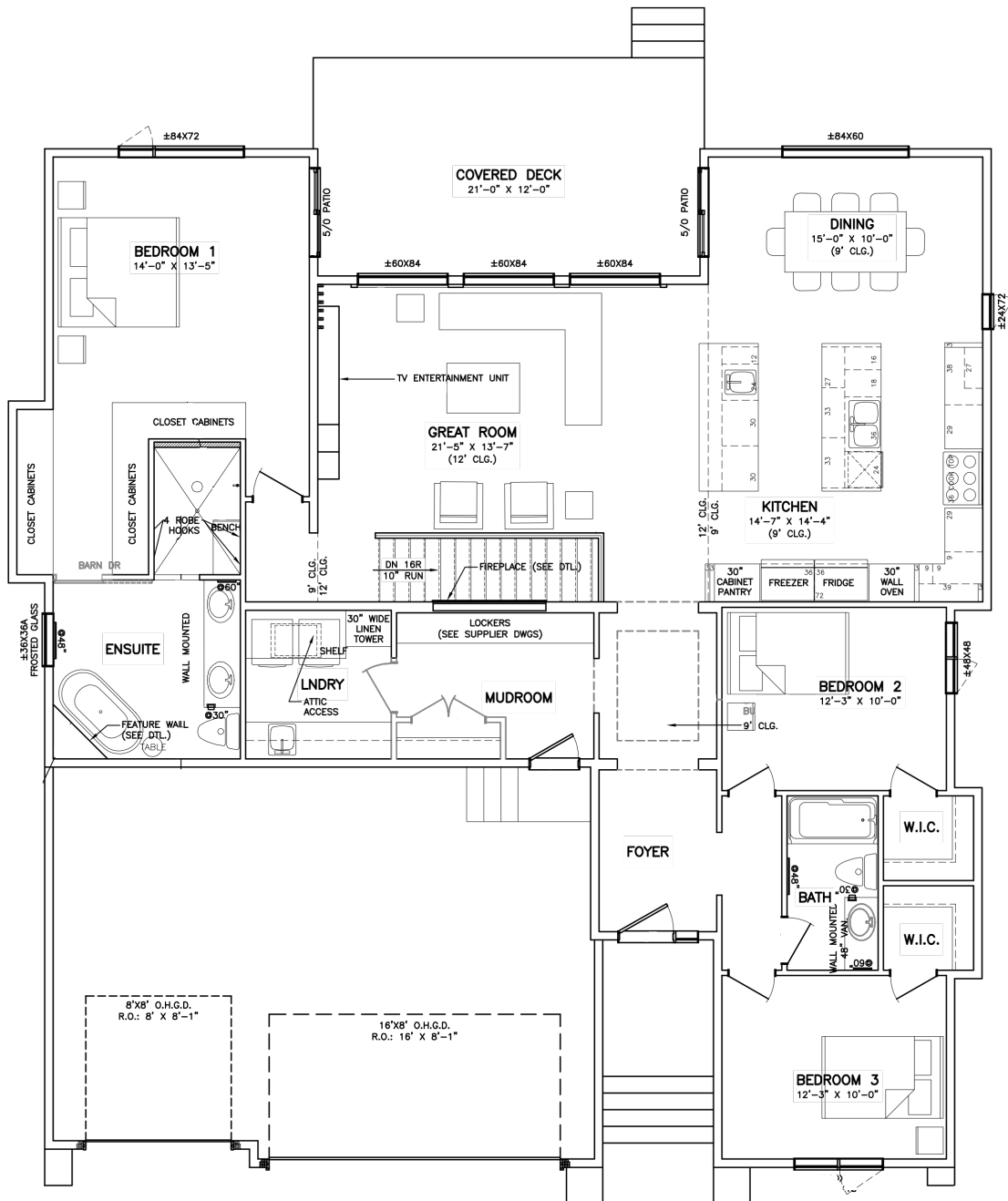
Bungalow, 1,995 sq. ft.

3 Bedrooms, 2 Bathrooms

TAYLOR FARM

MAIN FLOOR: 1,995 sq. ft.

## MAIN FLOOR



A QUALICO Company

ONE DR. DAVID FRIESEN DRIVE  
WINNIPEG, MANITOBA | R3X 0G8  
PHONE: 204.224.6175

For additional features & photos visit [foxridgehomeswpg.com/homes](http://foxridgehomeswpg.com/homes)

All illustrations are artist's conception and may vary. Room dimensions are approximate. Windows and room sizes may vary with elevations. Mechanical equipment location and placement subject to change as required by building code and at discretion of builder. Furniture outlines for purpose of visualizing room layout only, furniture not included. Foxridge Homes reserves the right to change material or specifications without notice.

