



# FOX RIDGE HOMES

A QUALICO Company



## 8 Stone Hearth Lane

CONCEPT 1004 A



### Bungalow - 1,686 sq. ft.

3 bedrooms, 2 bathrooms

#### OAK BLUFF WEST

You deserve a home that's as highly-evolved as you are. And you can recognize that difference from every angle: from the design drawings, to the elevation, to the minute you walk in the front door.

Your Foxridge custom home has it all, including impeccable craftsmanship, innovative features, high-end national brands, award-winning design, the ultimate warranty program – and of course – a distinctive style that's all your own.

#### SHOW HOME FEATURES:

- 30' x 22' triple car garage
- Kitchen island with Invisacook top
- Porcelain countertops in kitchen and coffee bar
- Caesarstone quartz countertops in main bath and ensuite
- Coffee bar with sink, cabinetry, and floating shelves in kitchen
- Electric fireplace with maple stained paneling and tile surround
- Convenient mud room with lockers and closet
- Primary bedroom with walk-in closet and 4-piece ensuite
- Laminate flooring in main living areas
- 1-2-5-10 National Home Warranty



# 8 Stone Hearth Lane

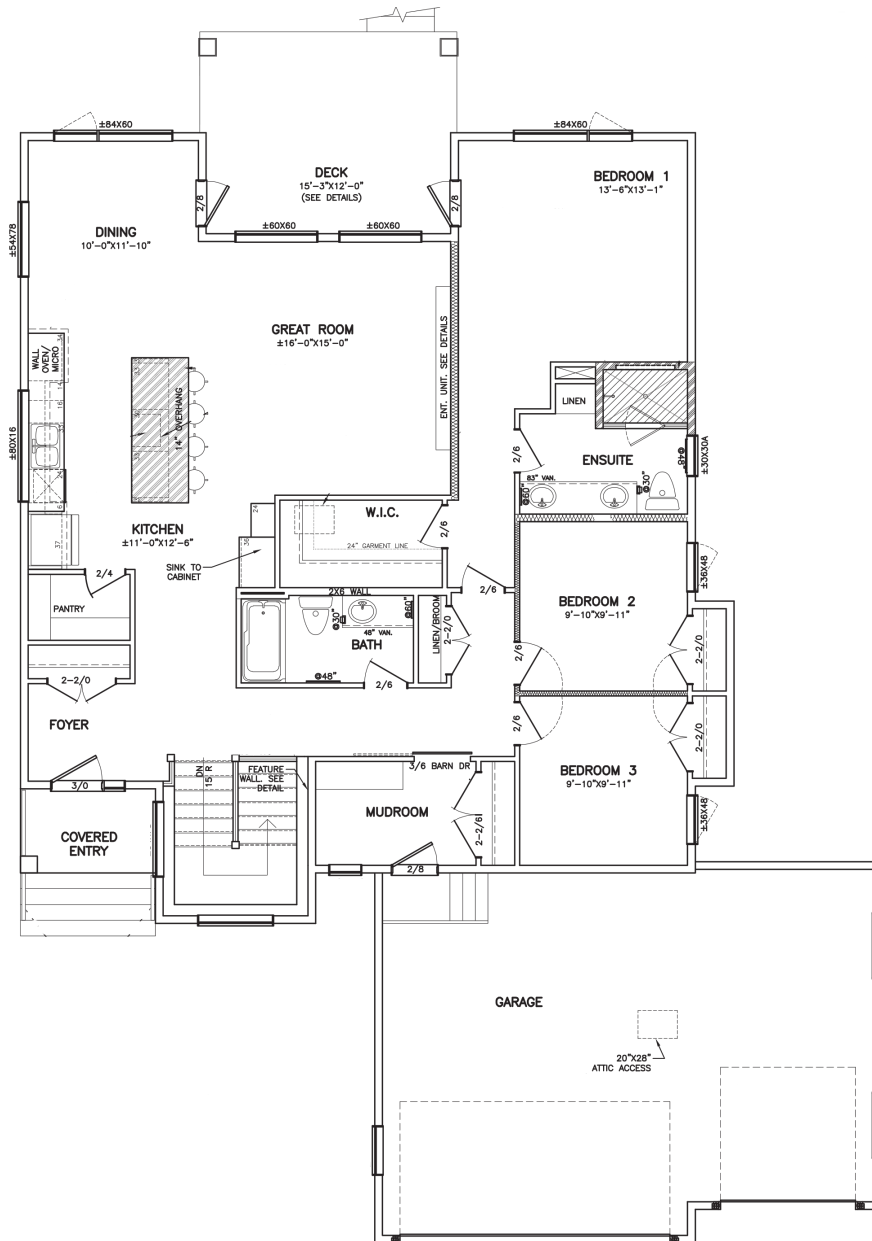
CONCEPT 1004 A

Bungalow - 1,686 sq. ft.

3 bedrooms, 2 bathrooms

OAK BLUFF WEST

## MAIN FLOOR



A QUALICO Company

ONE DR. DAVID FRIESE DRIVE  
WINNIPEG, MANITOBA | R3X 0G8  
PHONE: 204.224.6175

For additional features & photos visit [foxridgehomeswpg.com/homes](http://foxridgehomeswpg.com/homes)

All illustrations are artist's conception and may vary. Room dimensions are approximate. Windows and room sizes may vary with elevations. Mechanical equipment location and placement subject to change as required by building code and at discretion of builder. Furniture outlines for purpose of visualizing room layout only, furniture not included. Foxridge Homes reserves the right to change material or specifications without notice.