



# FOX RIDGE HOMES

A QUALICO Company



Standard exterior selections may be different than shown.

## 4 Erb Farm Road

CONCEPT 1004 A



### Bungalow, 1,686 sq. ft.

3 Bedrooms, 2 Bathrooms

#### OAK BLUFF WEST

You deserve a home that's as highly-evolved as you are. And you can recognize that difference from every angle: from the design drawings, to the elevation, to the minute you walk in the front door.

Your Foxridge custom home has it all, including impeccable craftsmanship, innovative features, high-end national brands, award-winning design, the ultimate warranty program – and of course – a distinctive style that's all your own.

#### HOME FEATURES:

- 20' x 28' triple car garage
- Enclosed mudroom with closet
- Kitchen with large island, ceramic tile backsplash and walk-in pantry
- Quartz countertops in kitchen, main bath, and ensuite
- Electric fireplace with ceramic tile surround
- Primary bedroom with walk-in closet and ensuite with double vanity
- High efficiency furnace and air conditioner
- LED lighting package
- Premium trimwork with 3" casings and 4" baseboards
- 1-2-5-10 National Home Warranty



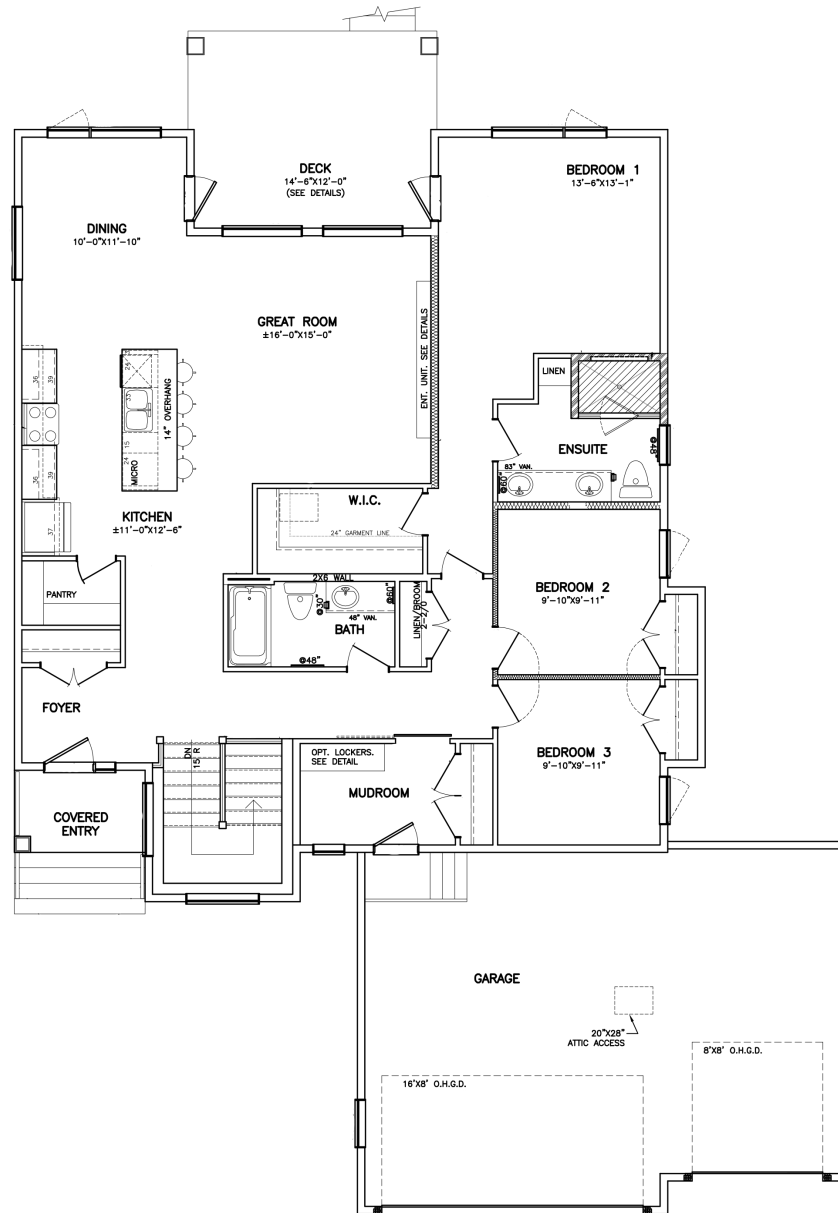
Bungalow, 1,686 sq. ft.

3 Bedrooms, 2 Bathrooms

OAK BLUFF WEST

MAIN FLOOR: 1,686 sq. ft.

## MAIN FLOOR



A QUALICO Company

ONE DR. DAVID FRIESEN DRIVE  
WINNIPEG, MANITOBA | R3X 0G8  
PHONE: 204.224.6175

For additional features & photos visit [foxridgehomeswpg.com/homes](http://foxridgehomeswpg.com/homes)

All illustrations are artist's conception and may vary. Room dimensions are approximate. Windows and room sizes may vary with elevations. Mechanical equipment location and placement subject to change as required by building code and at discretion of builder. Furniture outlines for purpose of visualizing room layout only, furniture not included. Foxridge Homes reserves the right to change material or specifications without notice.