



FOX RIDGE HOMES

A QUALICO Company



235 Yellow Moon Crescent

CONCEPT 2105 C



Two Storey, 2,378 sq. ft.
3 bedroom, 2.5 bathrooms

SAGE CREEK

You deserve a home that's as highly-evolved as you are. And you can recognize that difference from every angle: from the design drawings, to the elevation, to the minute you walk in the front door.

Your Foxridge custom home has it all, including impeccable craftsmanship, innovative features, high-end national brands, award-winning design, the ultimate warranty program - and of course - a distinctive style that's all your own.

FEATURES:

- 24' x 22' double attached garage
- Main floor study with built-in desk
- Convenient locker storage area
- Kitchen island with drop down counter and built-in corner open shelf
- Letter box windows in kitchen
- Electric fireplace with custom tile and maple surround
- Caesarstone quartz countertop to kitchen and all bathrooms
- Laminate flooring to main living area
- Primary bedroom with walk-in closet and 4-piece ensuite
- Second floor laundry room and loft space
- 1-2-5-10 National Home Warranty



235 Yellow Moon Crescent

CONCEPT 2105 C

Bungalow, 2,378 sq. ft.

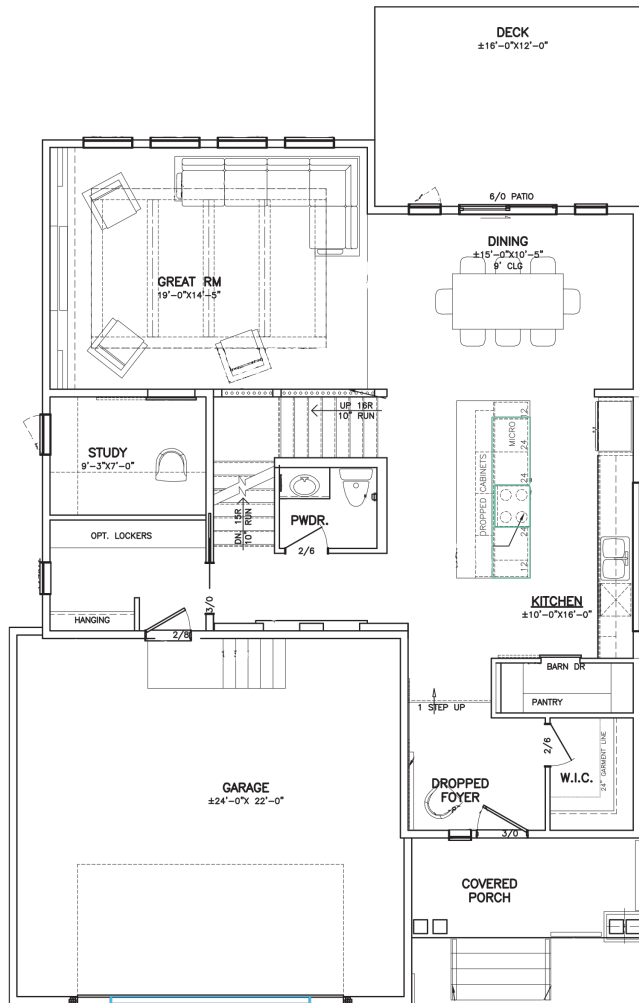
3 bedroom, 2.5 bathrooms

SAGE CREEK

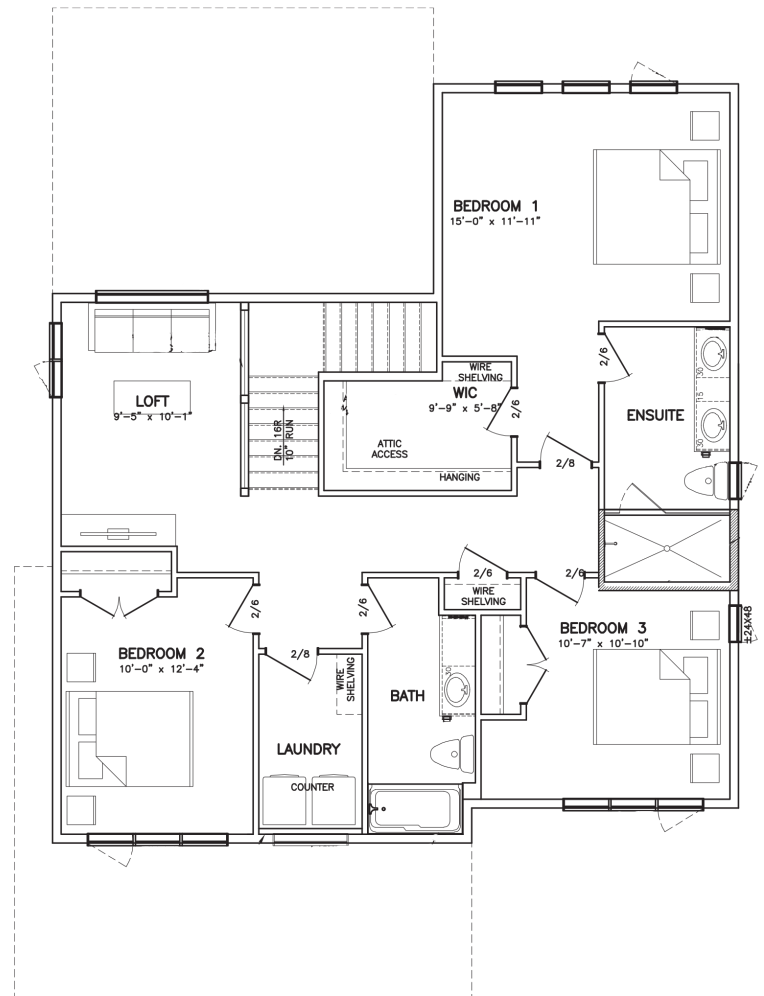
MAIN FLOOR: 1,189 sq. ft.

SECOND FLOOR: 1,189 sq. ft.

MAIN FLOOR



SECOND FLOOR



FOX RIDGE
HOMES

A QUALICO Company

ONE DR. DAVID FRIESEN DRIVE
WINNIPEG, MANITOBA | R3X 0G8
PHONE: 204.224.6175

For additional features & photos visit foxridgehomeswpg.com/homes

All illustrations are artist's conception and may vary. Room dimensions are approximate. Windows and room sizes may vary with elevations. Mechanical equipment location and placement subject to change as required by building code and at discretion of builder. Furniture outlines for purpose of visualizing room layout only, furniture not included. Foxridge Homes reserves the right to change material or specifications without notice.