



foxridgehomeswpg.com
204.224.6175



Concept 2109

Two Storey, 1,931 sq. ft.
3 bedrooms, 2 1/2 bathrooms

You deserve a home that's as highly-evolved as you are. And you can recognize that difference from every angle: from the design drawings, to the elevation, to the minute you walk in the front door.

Your Foxridge custom home has it all, including impeccable craftsmanship, innovative features, high-end national brands, award-winning design, the ultimate warranty program – and of course – a distinctive style that's all your own.

FEATURES:

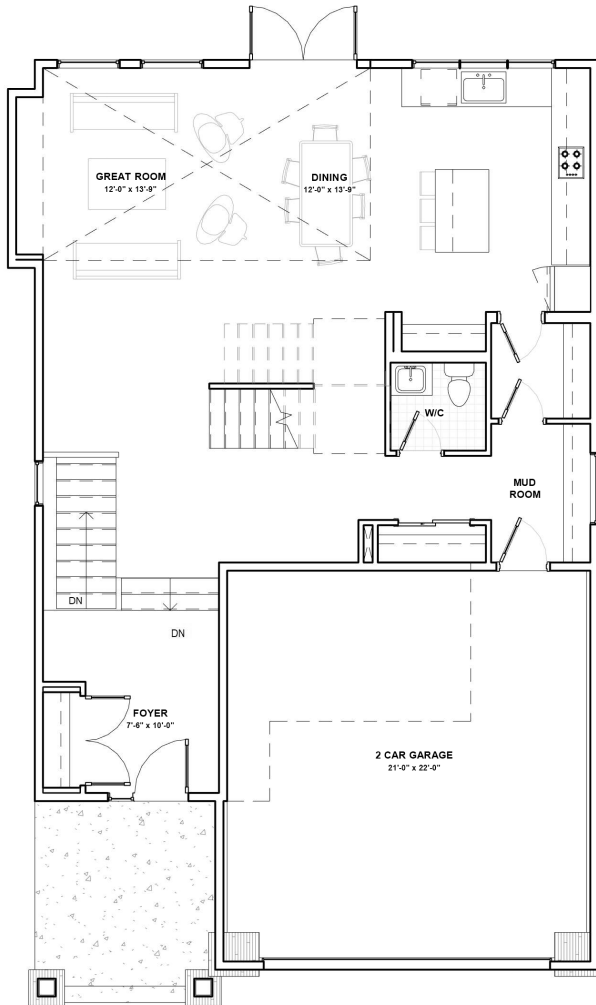
- Custom designed home
- 21' x 22' attached garage
- Open to above great room
- Large gourmet kitchen with Caesarstone countertops and walk-through pantry
- Vinyl plank or laminate flooring to main floor living areas
- Convenient second floor laundry room
- Master bedroom includes His and Her walk-in closets and ensuite with double vanity and large shower with bench
- 1-2-5-10 National Home Warranty

Concept 2109

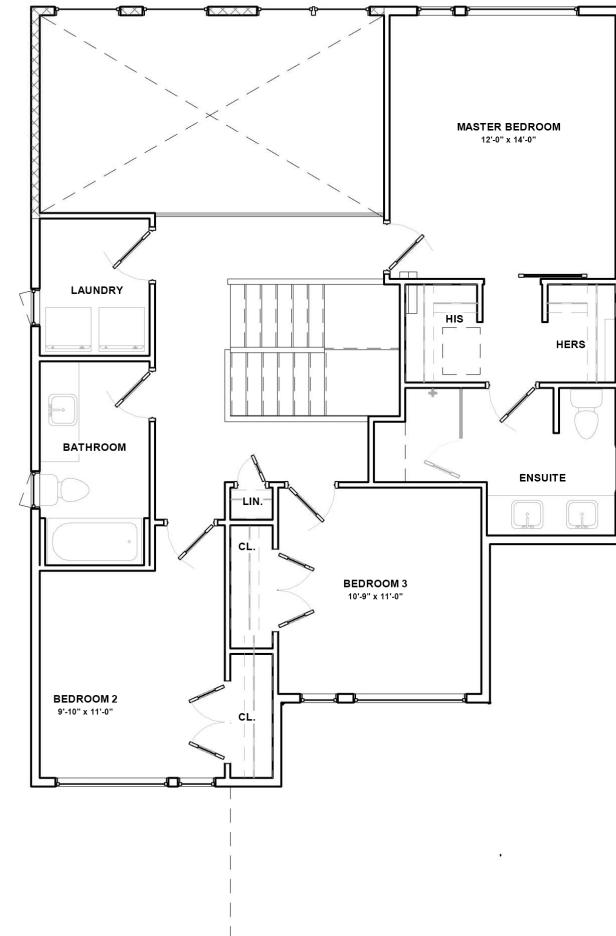
FLOOR PLAN

MAIN FLOOR: 1,044 SQ. FT.
SECOND FLOOR: 887 SQ. FT.

MAIN FLOOR



SECOND FLOOR



A QUALICO Company

ONE DR. DAVID FRIESEN DRIVE
WINNIPEG, MANITOBA | R3X 0G8
PHONE: 204.224.6175

foxridgehomeswpg.com

12/8/2020

All illustrations are artist's conception and may vary. Room dimensions are approximate. Windows and room sizes may vary with elevations. Mechanical equipment location and placement subject to change as required by building code and at discretion of builder. Furniture outlines for purpose of visualizing room layout only, furniture not included. Foxridge Homes reserves the right to change material or specifications without notice.