



foxridgehomeswpg.com
204.224.6175



Concept 1004 – Sierra

Bungalow, 1,656 sq. ft.
3 bedrooms, 2 bathrooms
22' x 22' attached garage

You deserve a home that's as highly-evolved as you are. And you can recognize that difference from every angle: from the design drawings, to the elevation, to the minute you walk in the front door.

Your Foxridge custom home has it all, including impeccable craftsmanship, innovative features, high-end national brands, award-winning design, the ultimate warranty program – and of course – a distinctive style that's all your own.

FEATURES:

- 9' painted drywall ceilings
- Vinyl plank or laminate flooring to kitchen, great room and dining room
- Caesarstone countertops in kitchen and ensuite
- Gas or electric fireplace with media rough-in, as per plan
- Programmable WIFI thermostat
- 60 gallon hot water tank
- High efficiency furnace & air conditioner
- 1-2-5-10 National Home Warranty

Concept 1004

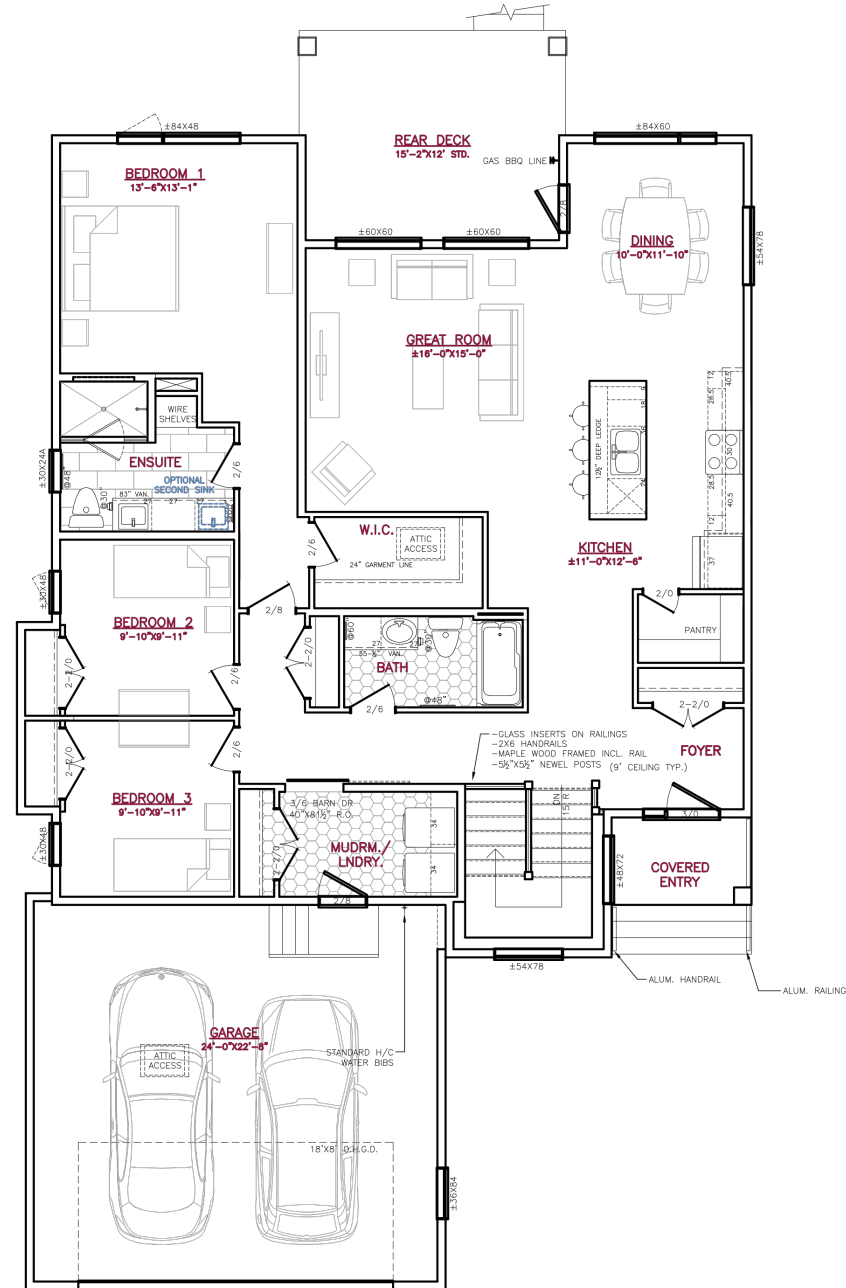
Bungalow, 1,656 sq. ft.

3 bedrooms, 2 bathrooms

All illustrations are artist's conception and may vary. Room dimensions are approximate. Windows and room sizes may vary with elevations. Mechanical equipment location and placement subject to change as required by building code and at discretion of builder. Furniture outlines for purpose of visualizing room layout only, furniture not included. Foxridge Homes reserves the right to change material or specifications without notice.

FLOOR PLAN

MAIN FLOOR



FOXRIDGE
HOMES

A QUALICO Company

ONE DR. DAVID FRIESEN DRIVE
WINNIPEG, MANITOBA | R3X 0G8
PHONE: 204.224.6175

foxridgehomeswpg.com