



FOXRIDGE HOMES

A QUALICO® Company

foxridgehomeswpg.com

204.224.6175



Concept 2120 – The Olympus

**Two Storey, 2,135 sq. ft.
3 bedrooms, 2.5 bathrooms**

You deserve a home that's as highly-evolved as you are. And you can recognize that difference from every angle: from the design drawings, to the elevation, to the minute you walk in the front door.

Your Foxridge custom home has it all, including impeccable craftsmanship, innovative features, high-end national brands, award-winning design, the ultimate warranty program – and of course – a distinctive style that's all your own.

FEATURES:

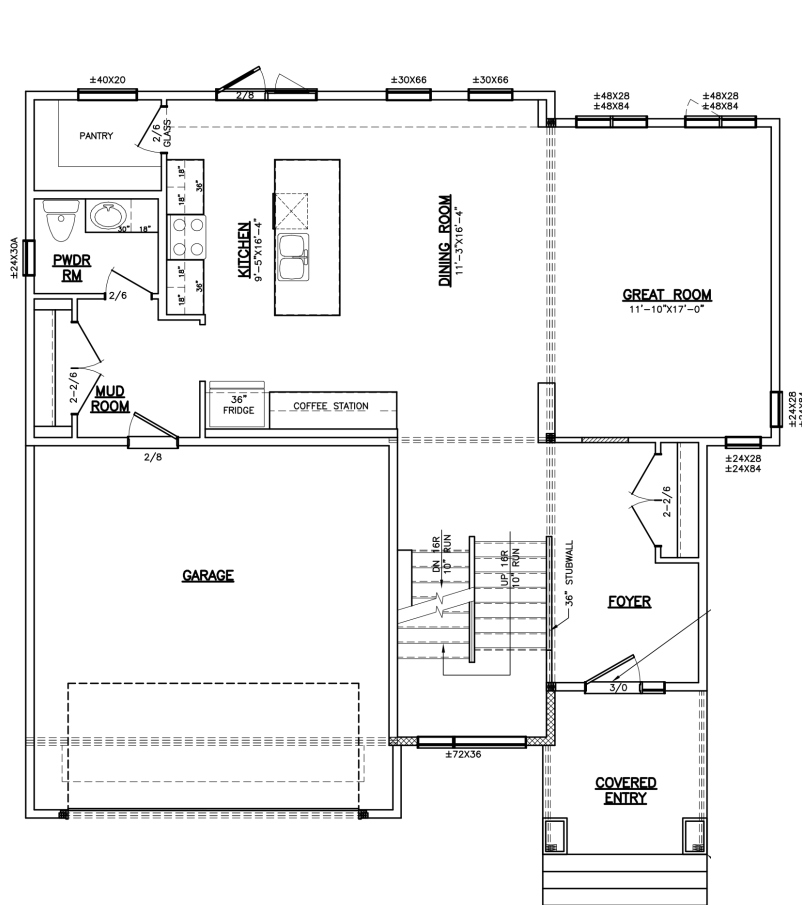
- 20' x 20' double car garage
- Caesarstone countertops in kitchen, powder room and ensuite
- Vinyl plank or laminate flooring to kitchen, great room and dining room
- Gas or electric fireplace with media rough-in, as per plan
- Triple pane and dual Low-E windows
- 200 amp panel
- 60 gallon hot water tank
- Programmable WIFI thermostat
- 1-2-5-10 National Home Warranty

Concept 2120

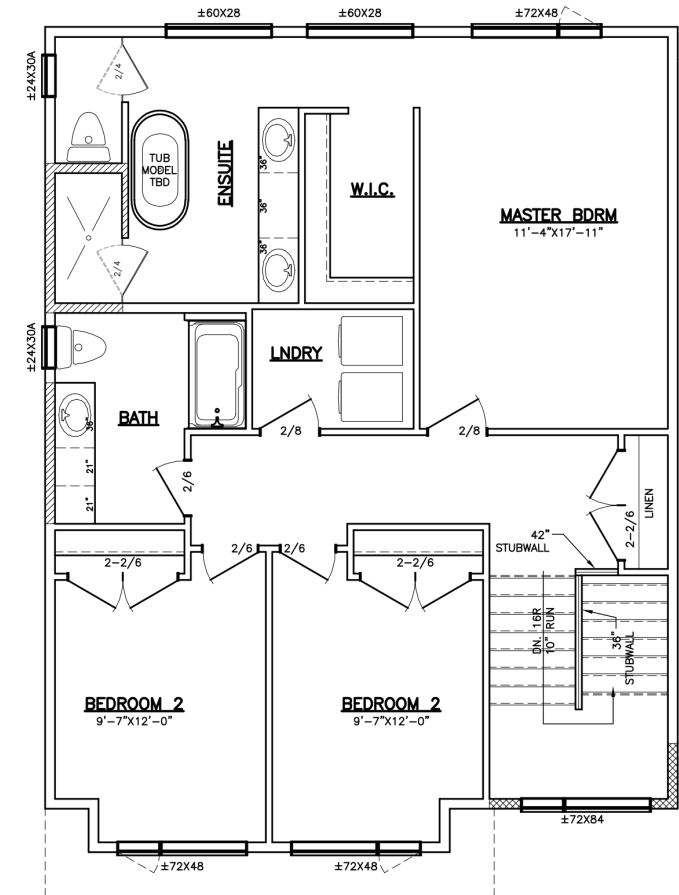
FLOOR PLAN

MAIN FLOOR: 1,054 SQ. FT.
SECOND FLOOR: 1,081 SQ. FT.

MAIN FLOOR



SECOND FLOOR



FOX RIDGE
HOMES

A QUALICO Company

ONE DR. DAVID FRIESEN DRIVE
WINNIPEG, MANITOBA | R3X 0G8
PHONE: 204.224.6175

foxridgehomeswpg.com

Revised 2/23/2021

All illustrations are artist's conception and may vary. Room dimensions are approximate. Windows and room sizes may vary with elevations. Mechanical equipment location and placement subject to change as required by building code and at discretion of builder. Furniture outlines for purpose of visualizing room layout only, furniture not included. Foxridge Homes reserves the right to change material or specifications without notice.