



Illustrations are artist concepts and may vary. Final drawings and elevation details are subject to architectural approval.

ELEVATION A



FOXRIDGE

HOMES

A QUALICO® Company

foxridgehomeswpg.com

204.224.6175



Concept 2107

Two Storey, 2,679 sq. ft.
3 bedrooms, 2 1/2 bathrooms + loft

You deserve a home that's as highly-evolved as you are. And you can recognize that difference from every angle: from the design drawings, to the elevation, to the minute you walk in the front door.

Your Foxridge custom home has it all, including impeccable craftsmanship, innovative features, high-end national brands, award-winning design, the ultimate warranty program – and of course – a distinctive style that's all your own.

FEATURES:

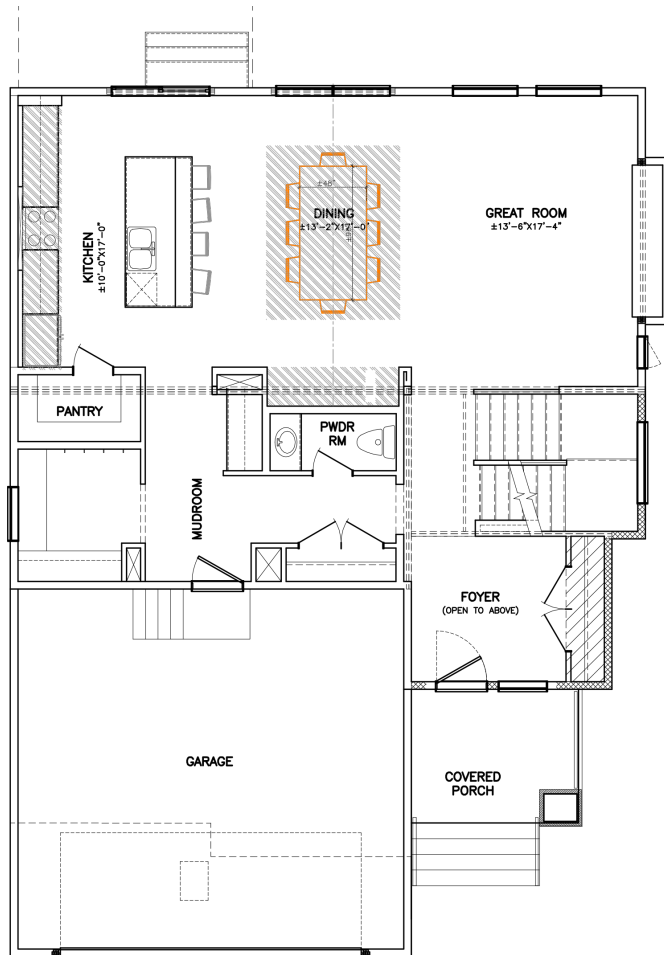
- 24' x 22' attached garage
- Caesarstone countertops in powder room, kitchen and ensuite
- Vinyl plank or laminate flooring to main floor living areas
- Master bedroom includes walk-in closet and 4-piece ensuite with double vanity and Award Marble shower
- High efficiency furnace and air conditioner
- Energy-efficient triple pane windows with 1 coat of Low-E and 1 argon gas filled space
- 1-2-5-10 National Home Warranty

Concept 2107

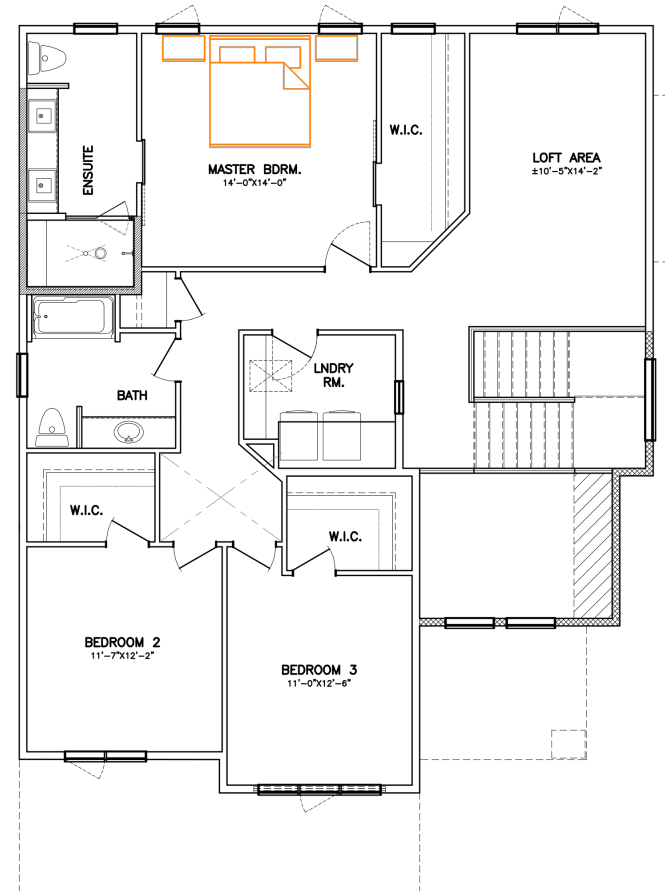
FLOOR PLAN

MAIN FLOOR: 1,223 SQ. FT.
SECOND FLOOR: 1,456 SQ. FT.

MAIN FLOOR



SECOND FLOOR



FOXRIDGE
HOMES

A QUALICO Company

ONE DR. DAVID FRIESEN DRIVE
WINNIPEG, MANITOBA | R3X 0G8
PHONE: 204.224.6175

foxridgehomeswpg.com

Revised 10/28/2020

All illustrations are artist's conception and may vary. Room dimensions are approximate. Windows and room sizes may vary with elevations. Mechanical equipment location and placement subject to change as required by building code and at discretion of builder. Furniture outlines for purpose of visualizing room layout only, furniture not included. Foxridge Homes reserves the right to change material or specifications without notice.