



Illustrations are artist concepts and may vary. Final drawings and elevation details are subject to architectural approval.

ELEVATION A



FOXRIDGE
HOMES

A QUALICO® Company

foxridgehomeswpg.com

204.224.6175



Concept 1452

Bungalow, 1,650 sq. ft.
3 bedrooms, 2 bathrooms

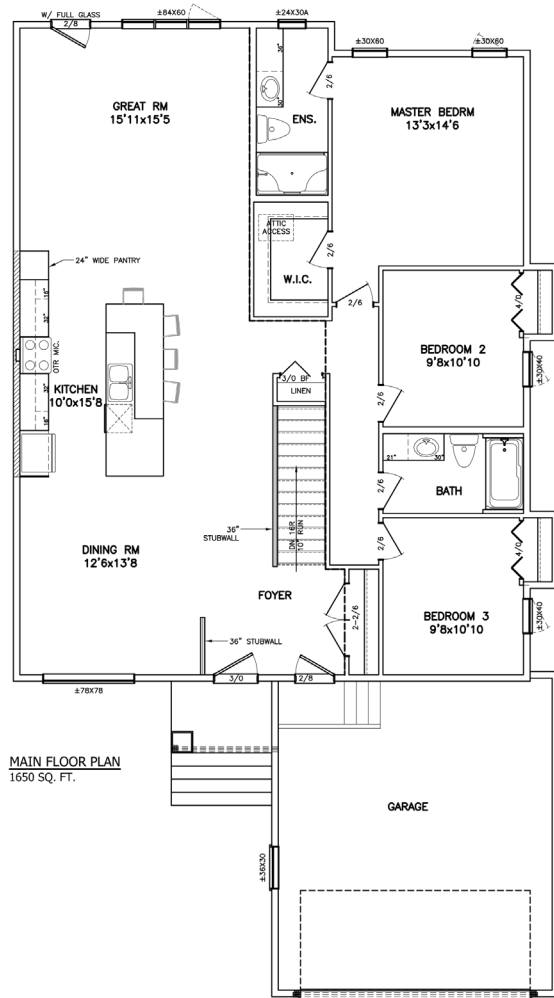
You deserve a home that's as highly-evolved as you are. And you can recognize that difference from every angle: from the design drawings, to the elevation, to the minute you walk in the front door.

Your Foxridge custom home has it all, including impeccable craftsmanship, innovative features, high-end national brands, award-winning design, the ultimate warranty program – and of course – a distinctive style that's all your own.

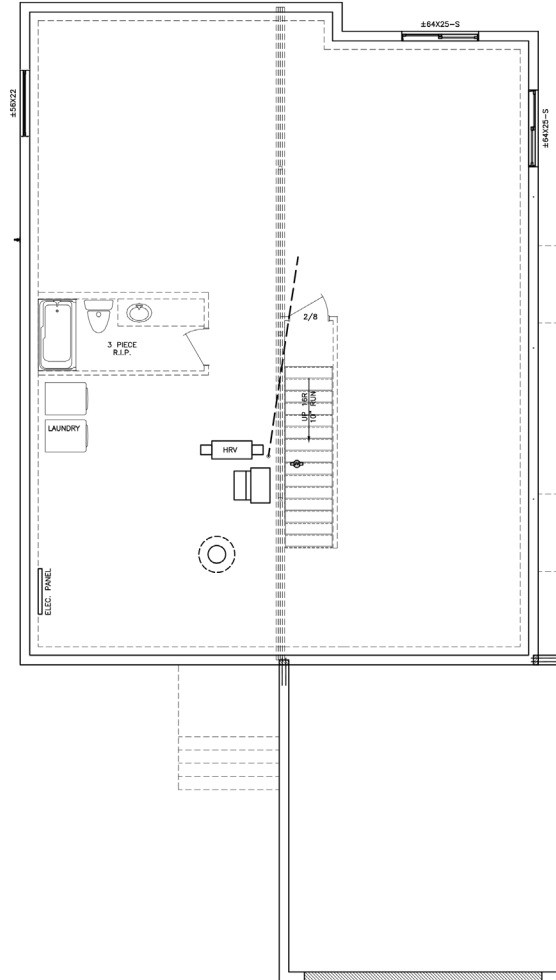
FEATURES:

- 20' x 22' attached garage
- Open concept great room, dining room and kitchen with vaulted ceilings
- Caesarstone countertops in kitchen and ensuite
- Vinyl plank or laminate flooring to main floor living areas
- Master bedroom includes walk-in closet and 3-piece ensuite with Award Marble shower
- Energy-efficient triple pane windows with 1 coat of Low-E and 1 argon gas filled space
- 1-2-5-10 National Home Warranty

MAIN FLOOR



BASEMENT (OPTIONAL LOWER LEVEL DEVELOPMENT)



A QUALICO Company

ONE DR. DAVID FRIESEN DRIVE
WINNIPEG, MANITOBA | R3X 0G8
PHONE: 204.224.6175

foxridgehomeswpg.com

Revised 10/28/2020

All illustrations are artist's conception and may vary. Room dimensions are approximate. Windows and room sizes may vary with elevations. Mechanical equipment location and placement subject to change as required by building code and at discretion of builder. Furniture outlines for purpose of visualizing room layout only, furniture not included. Foxridge Homes reserves the right to change material or specifications without notice.